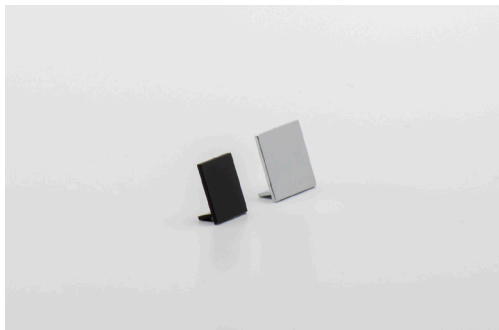


PGCH CHANNEL END CAPS



We designed our PGCHCAP Channel End Caps as the perfect solution to finishing off a frameless installation.

Easily installed in the end of the channel, they hide from view the glass/silicon/channel assembly, providing a clean professional look.

- Suited to PGCH1814 and PGCH1510 channels only
- Available in SB and BK
- Made in plastic
- SB finish is electroplated

**AVAILABLE NOW**

- In PivotPoint Pro, select as a Frameless configuration option
- Or, order on PivotPoint
- Item codes:
 - PGCH1814CAPSB
 - PGCH1814CAPBK
 - PGCH1510CAPSB
 - PGCH1510CAPBK